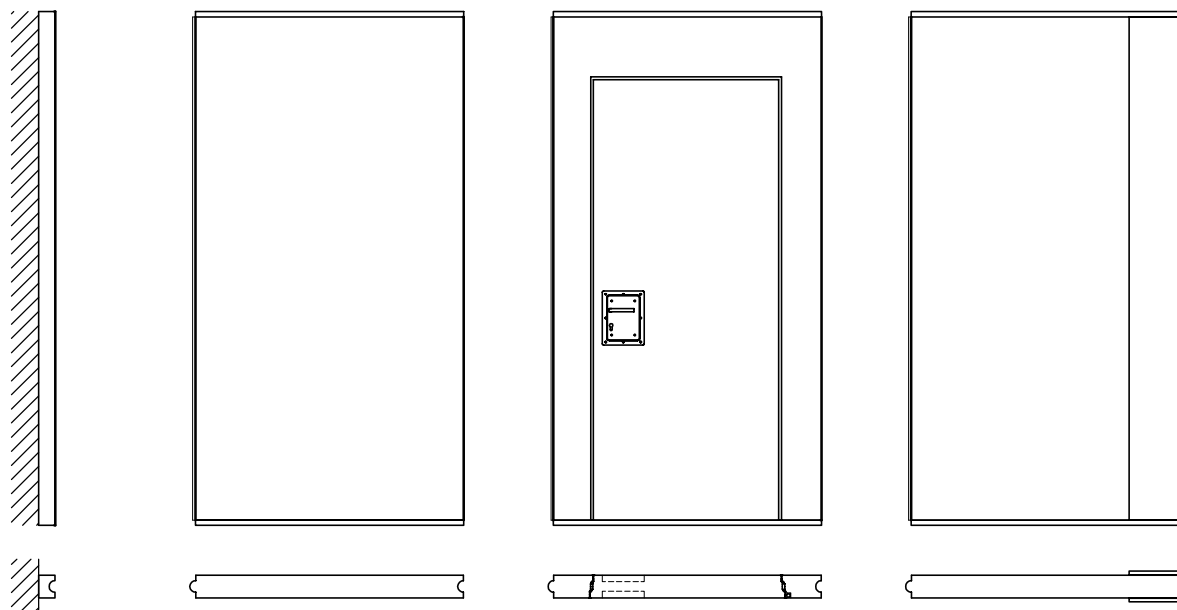


CATALOGO TECNICO

OFFICE 110

MODULI DISPONIBILI



IE, FE

Moduli da parete
E - iniziale, FE - finale

NE

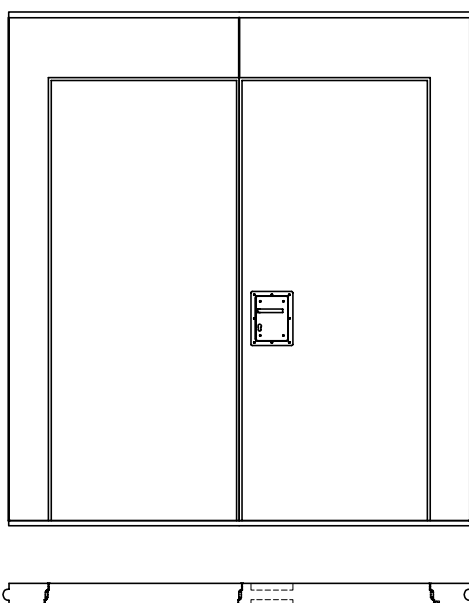
Modulo
standard

DE

Modulo
da porta

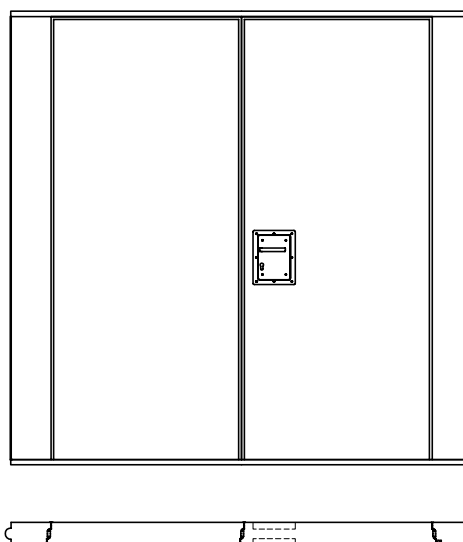
TE

Modulo
a telescopio



DE2

Modulo
da porta doppio



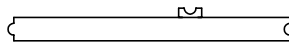
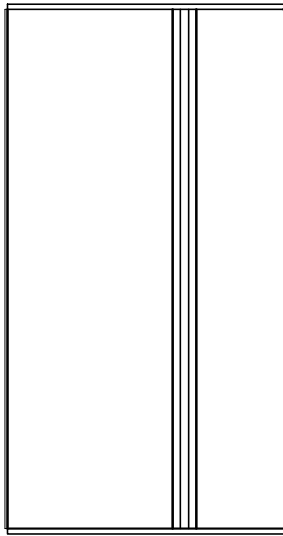
DE3

Modulo
da porta abbassato



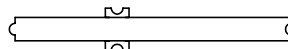
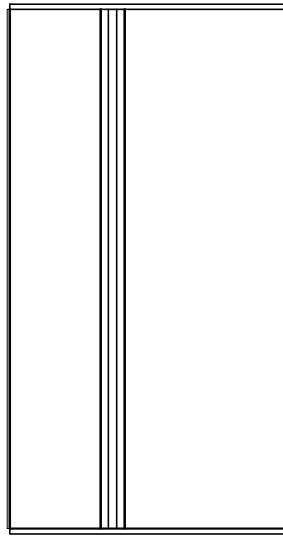
OPTIMAL
SISTEMA DI PARETI MANOVRABILI

MODULI DISPONIBILI



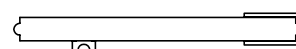
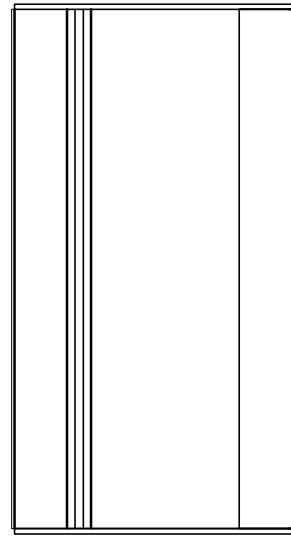
NE-T

Modulo angolare



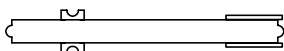
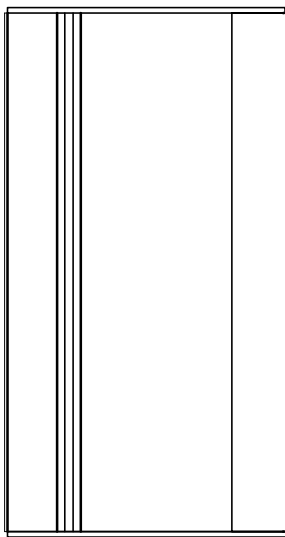
NE-X

Modulo a croce



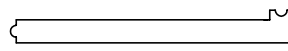
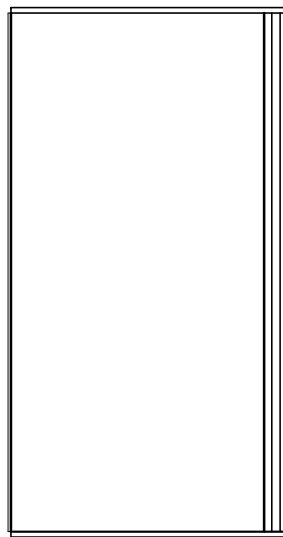
TE-T

Modulo angolare
a telescopio



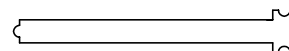
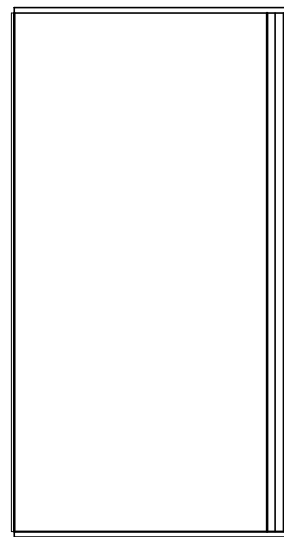
TE-X

Modulo a croce
a telescopio



NE-L

Modulo angolare



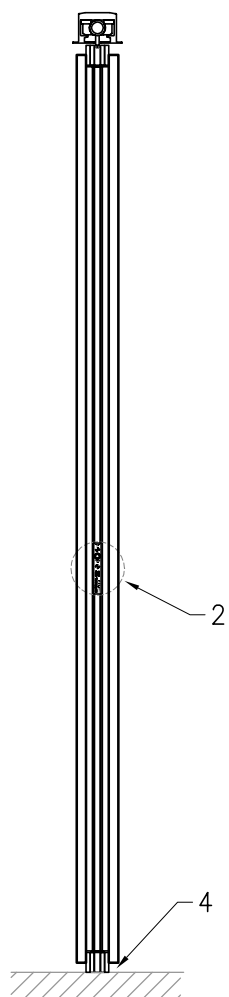
NE-2L

Modulo angolare
doppio



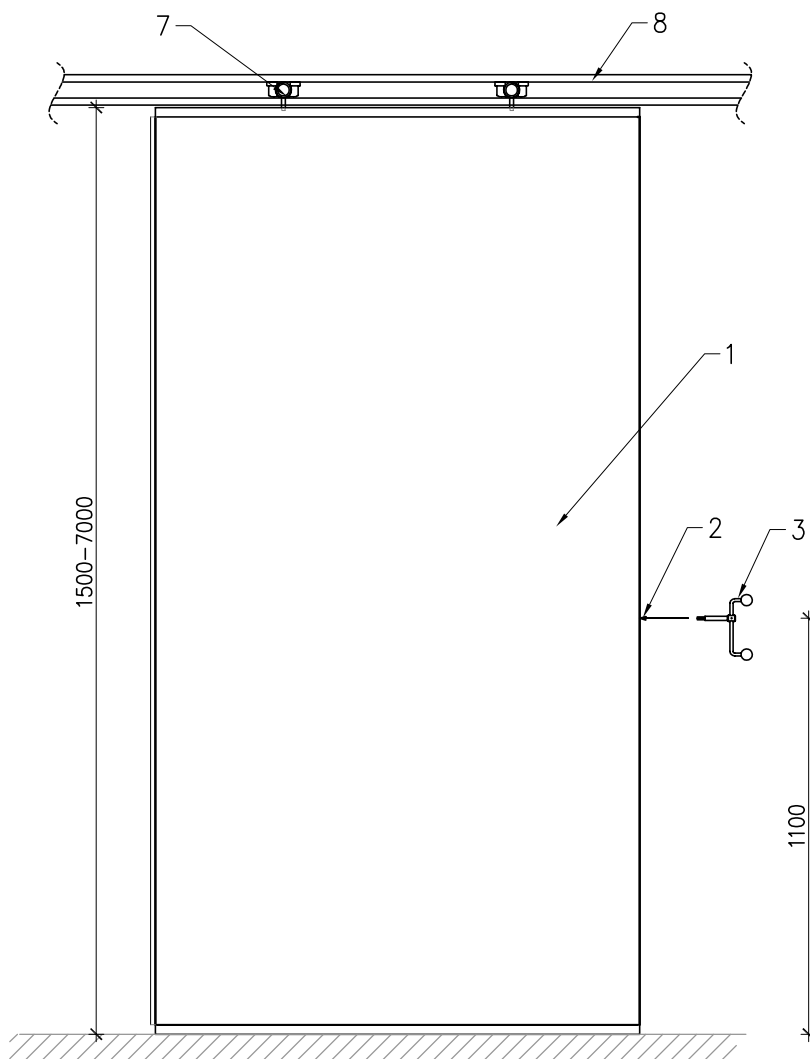
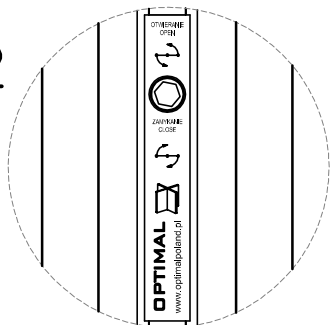
OPTIMAL
SISTEMA DI PARETI MANOVRAILI

MODULO STANDARD NE

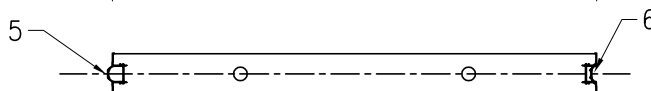


110

2



780-1280



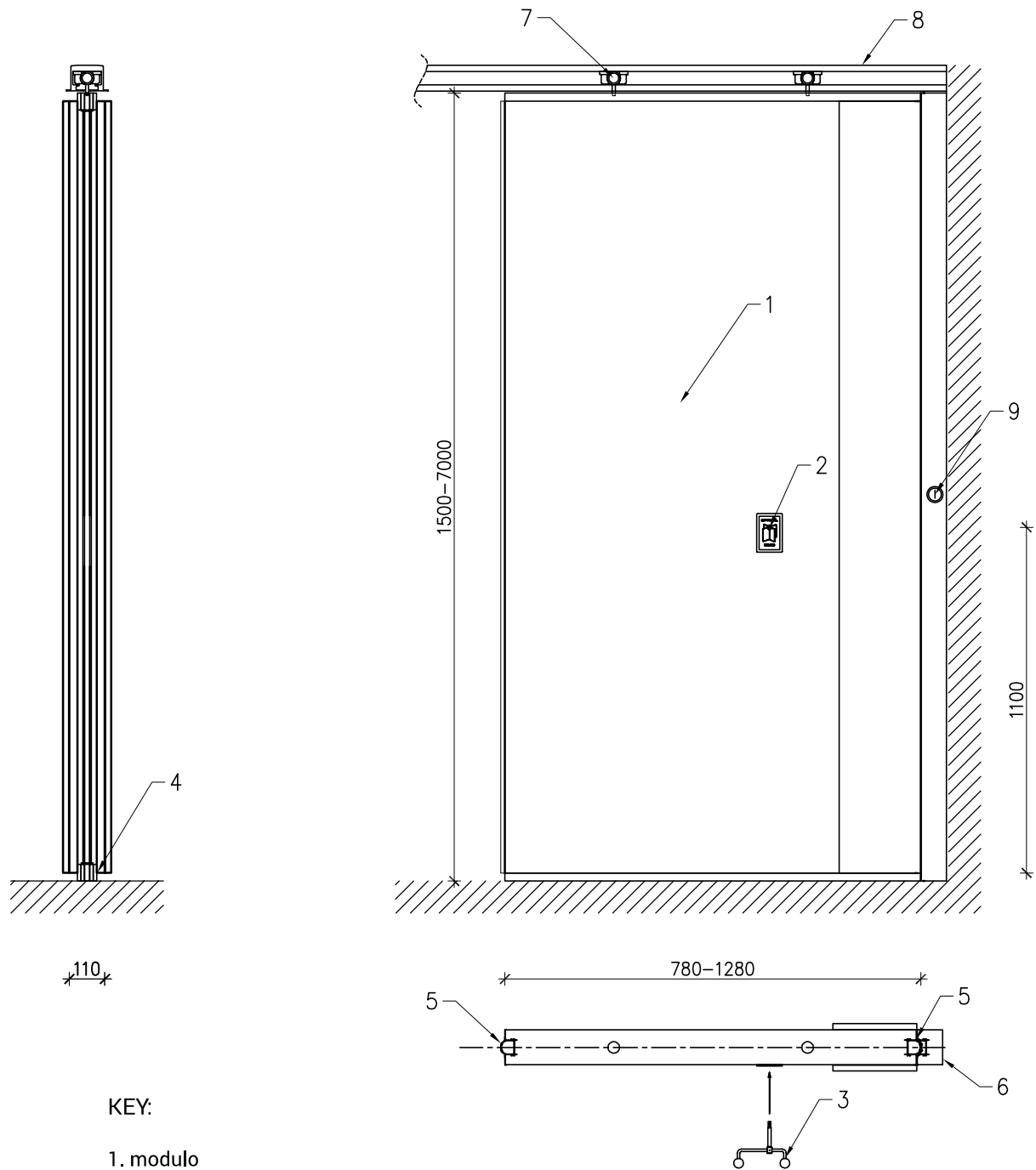
LEGENDA:

- 1. modulo
- 2. sede della manovella
- 3. manovella
- 4. gruppo di guarnizioni estraibili
- 5. scanalatura
- 6. linguetta
- 7. carrello motore
- 8. binario



OPTIMAL
SISTEMA DI PARETI MANOVRAILI

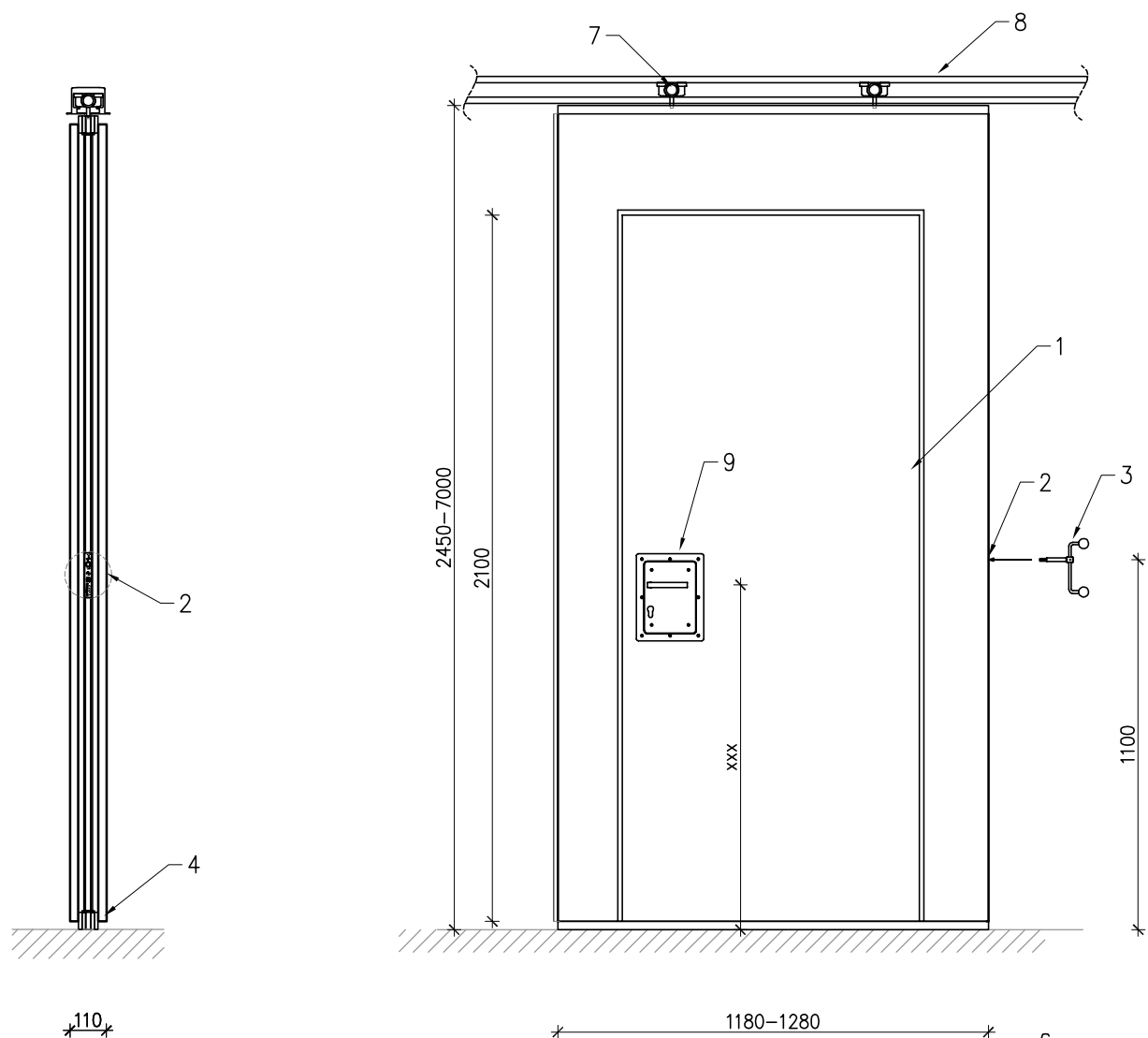
MODULO A TELESCOPIO



KEY:

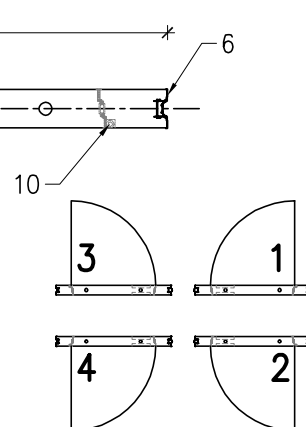
1. modulo
2. sede della manovella con pannello cieco
3. manovella
4. gruppo di guarnizioni acustiche
5. braccio
6. modulo finale FE
7. carrello motore
8. binario
9. sede della chiave

MODULO DA PARETE DE

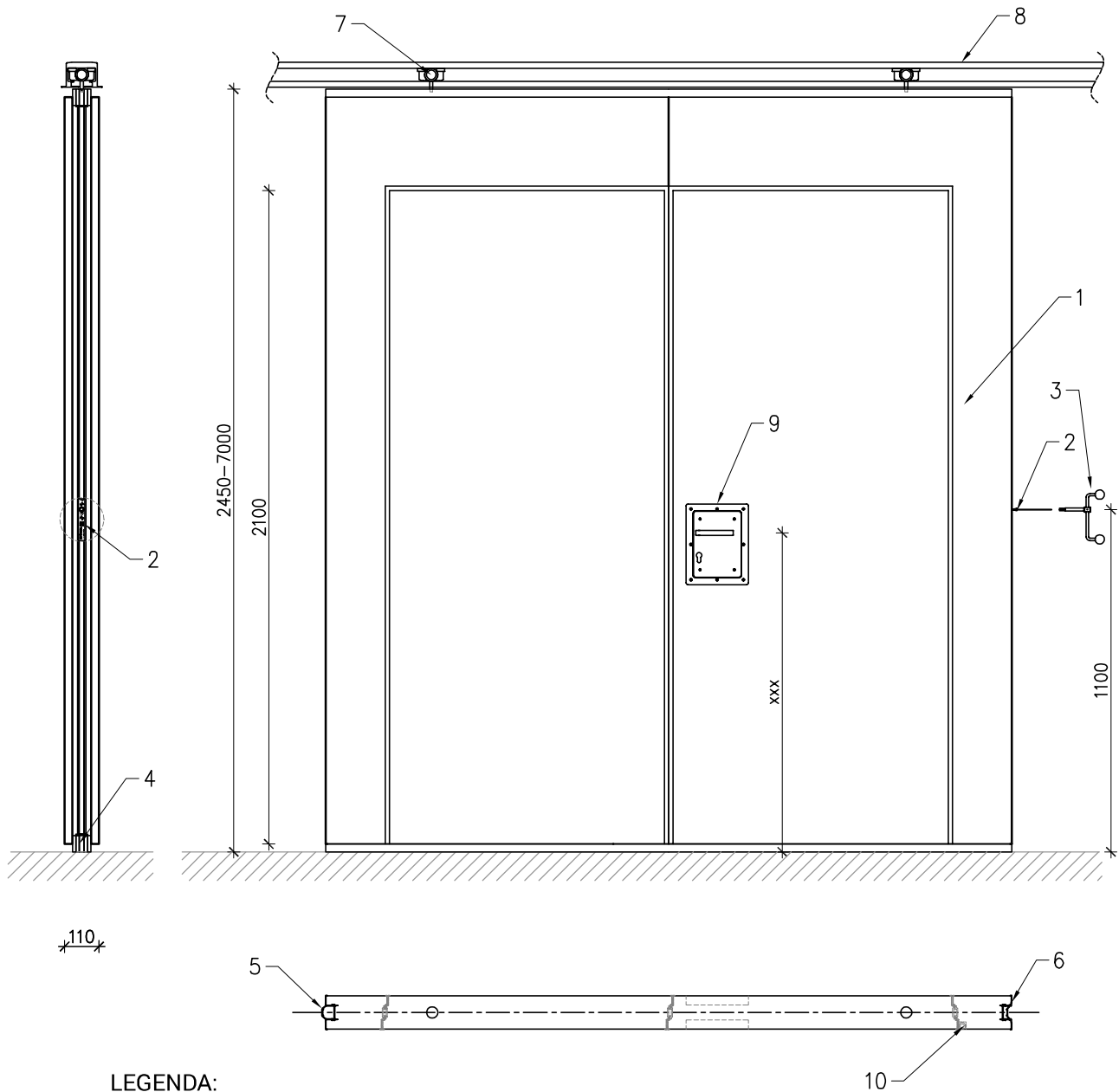


LEGENDA:

- 1. modulo
- 2. sede della manovella
- 3. manovella
- 4. gruppo di guarnizioni acustiche
- 5. scanalatura
- 6. linguetta
- 7. carrello motore
- 8. binario
- 9. cassetto della serratura
- 10. cerniera nascosta nel modulo

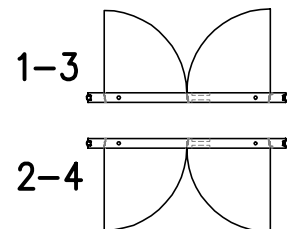


MODULO DA PARETE DE2

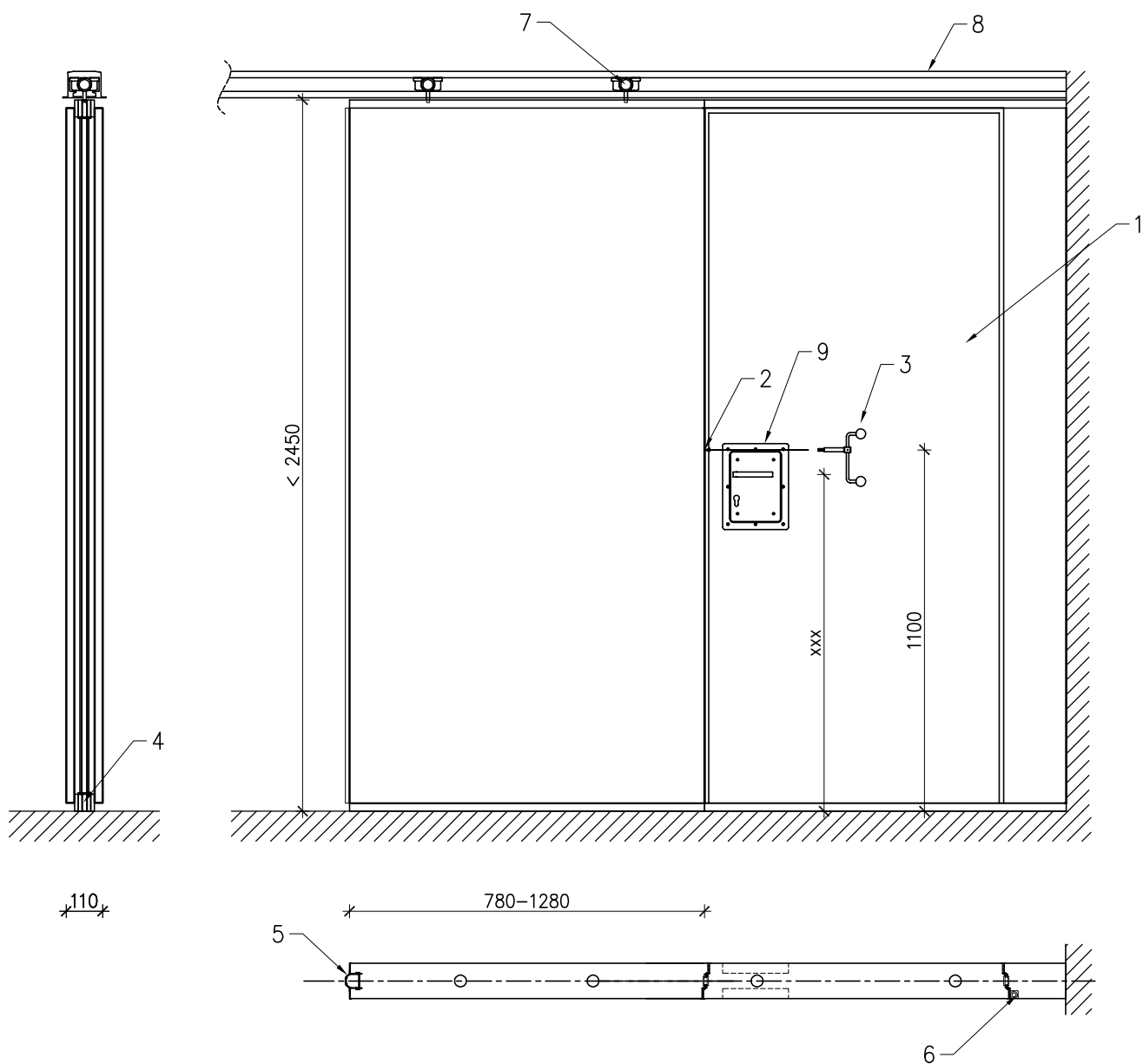


LEGENDA:

- 1. modulo
- 2. sede della manovella
- 3. manovella
- 4. gruppo di guarnizioni acustiche
- 5. scanalatura
- 6. linguetta
- 7. carrello motore
- 8. binario
- 9. cassetto della serratura
- 10. cerniera nascosta nel modulo



MODULO DA PARETE ABBASSATO DE3



KEY:

1. modulo
2. sede della manovella
3. manovella
4. gruppo di guarnizioni acustiche
5. braccio
6. cerniera nascosta nel modulo
7. carrello motore
8. binario
9. cassetto della serratura

